

# Environment, Social and Governance

Normally, ESG (Environment, Social and Governance) is seen as a reporting methodology that reflects the global desire for the protection of the environment, respect for people and transparency of governance processes.

The Shire of Coolgardie is intent on integrating ESG into its internal functions and its business operations.

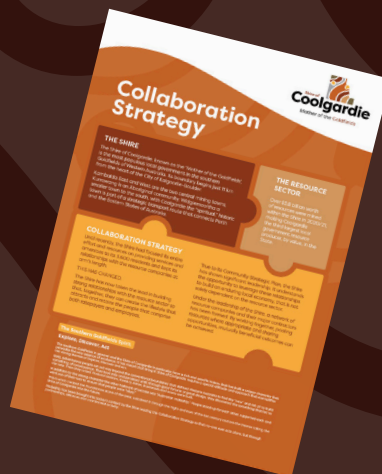
Rather than it being seen as a tool to report on current practice, through innovation, the Shire's desire is for it to frame the way it operates. Furthermore, the Shire wants to use it as a process to engage with its residents and communities, with industry, with government and other stakeholders to make it a tangible part of everyday life.

To provide an incentive to industry, the Shire will collate the input of industry into the Community Strategic Plan and provide them with an annual summary which can be used in their reporting processes.



## The Collaboration Strategy

The relationship that the Shire has built with the resource sector in recent years and captured in the 2021 Collaboration Strategy will be further enhanced through the implementation of this Community Strategic Plan.



# ESG Model



## INTERNAL PRACTICES



- E**nvironmental
- S**ocial
- G**overnance

\* Priorities from Community Engagement (Community Strategic Plans 2018-2028)