



View indicative only

200228D
 THE TRUSTEE FOR IOR PROPERTY TRUST
 MULTIPLE SITES
 QLD
 4.2 x 3.0m ABLUTION

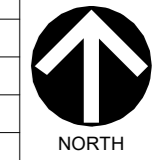
DRAWING LIST		
SHEET NUMBER	SHEET NAME	CURRENT REVISION
A000	TITLE PAGE	B
A200	PLAN	B
A300	ELEVATIONS	B
A500	SALES SCHEDULES	B

ATCO

ATCO STRUCTURES & LOGISTICS PTY. LTD. PHONE: (07) 3412 8600
 55 TONKA STREET, LUSCOMBE, QLD 4207 FAX: (07) 3412 8699
 P.O. BOX 393, BEENLEIGH, QLD 4207 ABN: 71 083 902 309
 E-mail: ASLAu.Sales@atco.com

ISSUED FOR REVIEW

WIND REGION:	B
TERRAIN CATEGORY:	2
IMPORTANCE LEVEL:	2
SHIELDING FACTOR:	NS
BUILDING CLASS:	10a
FLOOR LOADS	DISTRIBUTED (kPa): 2.0
	CONCENTRATED (kN): 1.8
CLIMATE ZONE:	2



FLOOR LOADS CALCULATED FROM AS1170.1 - 2002.
WIND SPEED CALCULATED FROM AS1170.2 - 2011.
BUILDING CLASS, IMPORTANCE LEVEL, PROBABILITY OF EXCEEDANCE, WIND REGION, TERRAIN CATEGORY, TOPOGRAPHIC CLASSIFICATION, SHIELDING FACTOR, CLIMATE ZONE & NORTH POINT ARE ASSUMED UNLESS OTHERWISE ADVISED BY CLIENT.

ROOM SCHEDULE	
NAME	AREA
WC / SHR.01	5.52 m ²
WC / SHR.02	5.52 m ²

FINISHES SCHEDULE	
FLOOR COVERING	2mm VINYL - SLIP RESISTANT - WC / SHR AREAS ONLY - 500mm COVERED
CLADDING - EXTERNAL	COLORBOND MAXIRIB - HORIZONTAL
CLADDING - EXTERNAL	COLORBOND MAXIRIB - HORIZONTAL
CLADDING - EXTERNAL	COLORBOND MAXIRIB - HORIZONTAL
WALL LINING - INTERNAL	3.6mm POLYESTER COATED PLYWOOD
CEILING LINING - INTERNAL	3.6mm COATED PLYWOOD
ROOF SHEETING	0.42mm BMT SUPERDEK ROOFING

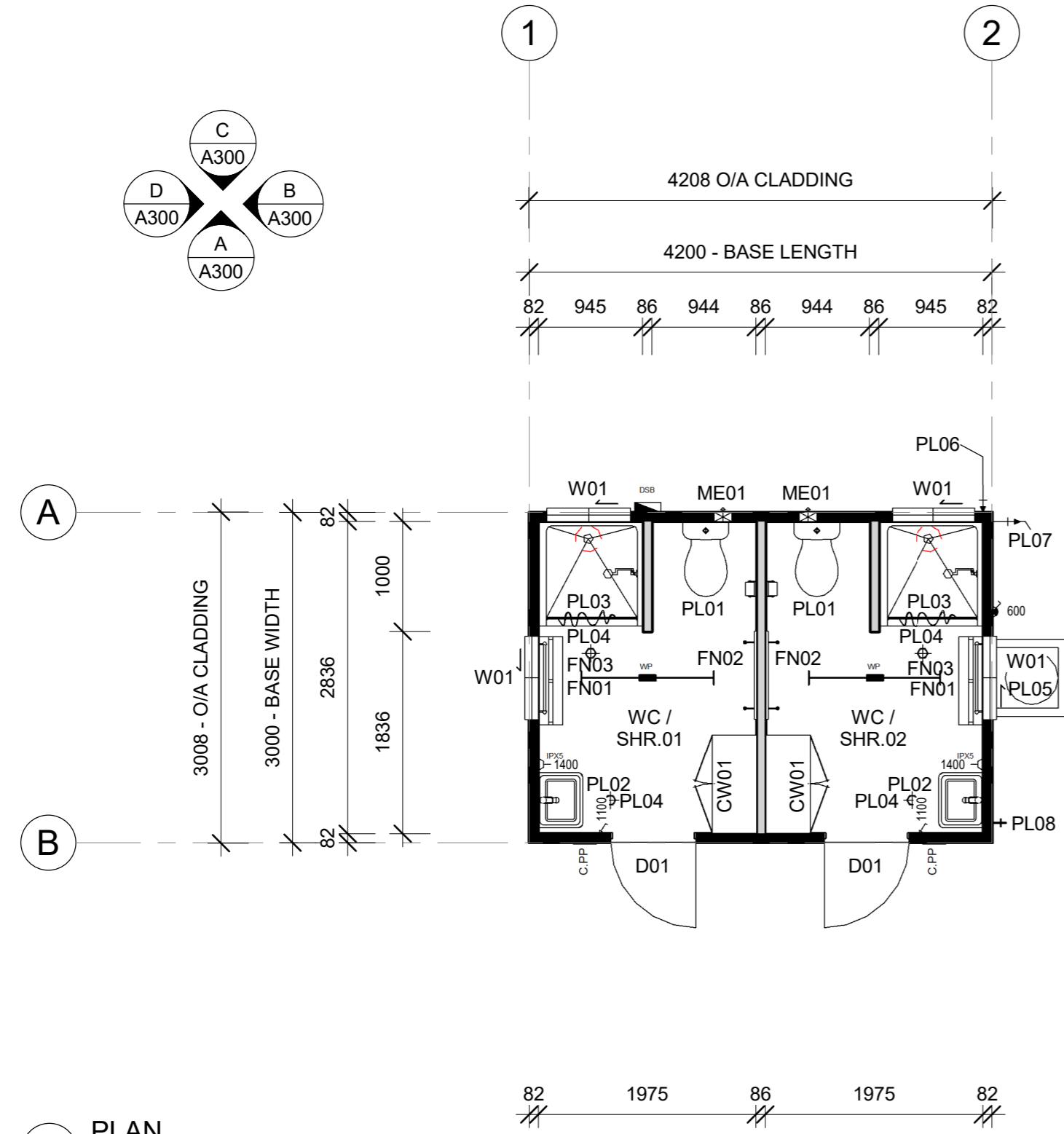
ITEM LIST		
ITEM	QTY	DESCRIPTION
Casework		
CW01	2	CUPBOARD (LOCKABLE) w/ LEGS UNDER, 2 DOOR & 4 SHELVES - 900 x 400 x 2100H
Furniture		
FN01	2	BENCH SEAT, SLATTED TIMBER - 220mm WIDE - 800mm LONG - 450mm HIGH
FN02	2	COAT HOOKS ON TIMBER RAIL - 800L
FN03	2	TOWEL RAIL, CHROME PLATED - 600mm LONG
Plumbing Fixtures		
PL01	2	WC SUITE c/w TOILET ROLL HOLDER
PL02	2	HAND BASIN, STAINLESS STEEL (HOT & COLD FLICKMIXER) w/ 300mm SPLASHBACK & MIRROR (STAINLESS STEEL)
PL03	2	SHOWER CUBICLE, FIBREGLASS - 945 x 945
PL04	4	FLOOR WASTE
PL05	1	HOT WATER SYSTEM, MOUNTED EXTERNALLY - 125Ltr, 1x3.6kW
PL06	1	WATER INLET
PL07	1	WASTE MANIFOLD OUTLET
PL08	1	HOSE COCK w/ VACUUM BREAK (VANDAL PROOF)

GENERAL NOTES

- NO ALLOWANCE OF SECTION J ENERGY EFFICIENCY
- NO ALLOWANCE FOR COMPLIANCE WITH AS1428.1 - 2009 (DESIGN FOR ACCESS & MOBILITY)
- NO ALLOWANCE FOR FIRE SEPARATION FROM EXISTING BUILDINGS / STRUCTURES ON SITE
- NO ALLOWANCE FOR FIRE FIGHTING EQUIPMENT
- LANDING & STAIRS/RAILINGS INSTALL ON SITE BY OTHERS

SYMBOL LEGEND

	ELECTRICAL SWITCHBOARD
	LIGHT SWITCH, SINGLE
	ISOLATION SWITCH
	GPO, SINGLE POLE - 1x10A IPX5
	CONDUIT - PINPAD PROVISION (PINPAD BY OTHERS) (WALL PENETRATION BY ATCO - 235H - 172W - 26D) (200 DOOR FRAME TO PAD CENTRE - BOTTOM OF PAD AT LOCKING MECHANISM HEIGHT)
	LIGHT - 40W LED BATTEN - IP65
	PLUMBING WATER INLET POINT
	PLUMBING WASTE MANIFOLD OUTLET POINT



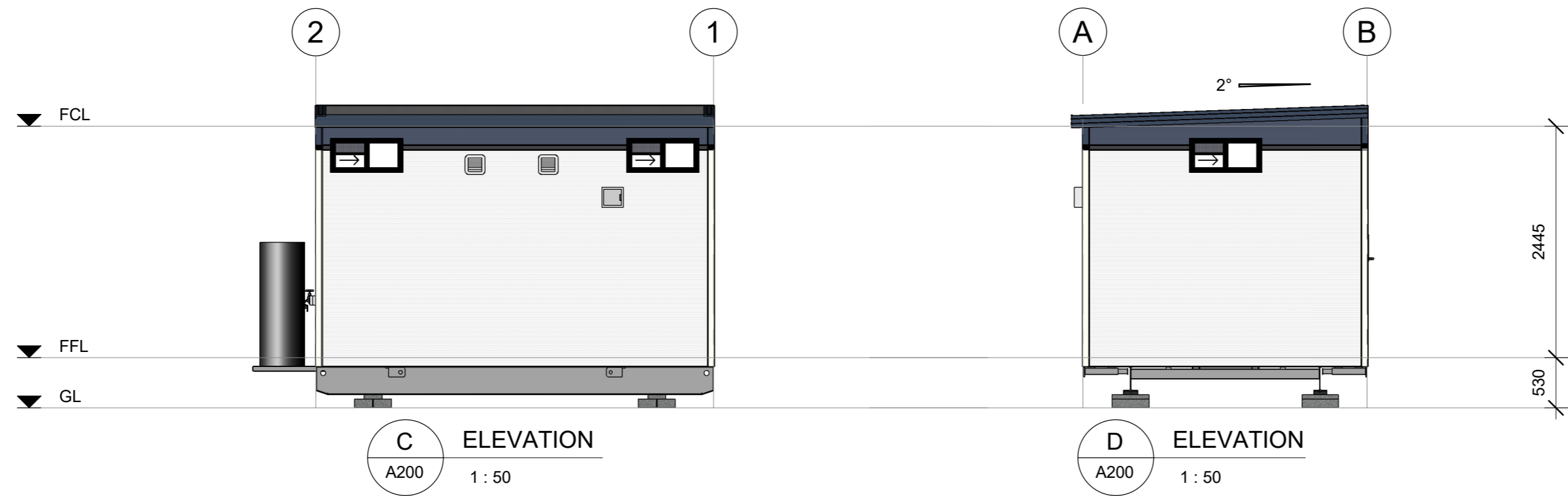
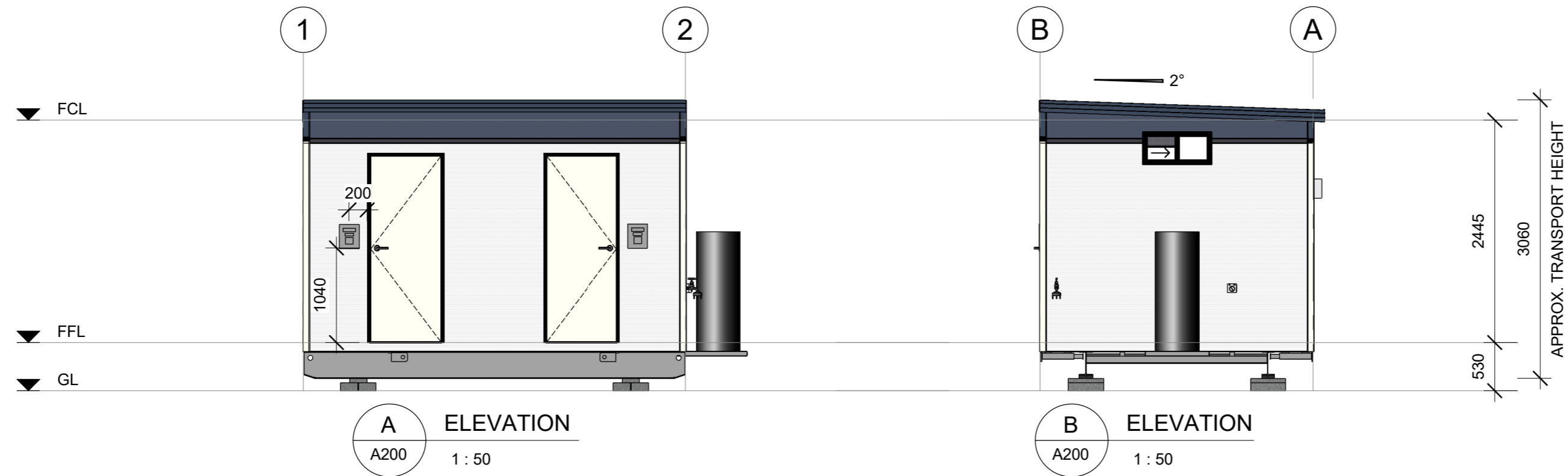
1 PLAN
1 : 50

REV	DESCRIPTION	DATE	BY	CHKD
A	ISSUED FOR REVIEW	06.08.20	VT	
B	LAYOUT CHANGED AS PER CLIENT, ADDED HOSE COCK, ADDED LOCK TO DSB, ADDED CUPBOARDS	31.08.20	VT	

CONFIRM DETAILS OF SET OUTS, LEVELS AND CRITICAL DIMENSIONS ON SITE PRIOR TO SHOP DRAWINGS AND FABRICATION. QUALITY CERTIFIED TO AS/NZS ISO 9001:2008 BY SCI-QUAL INTERNATIONAL REGN No. 531. DO NOT SCALE FROM THIS DRAWING. USE FIGURED DIMENSIONS. OVERALL DIMENSIONS EXCLUDE EXTERNAL CLADDINGS U.N.O. ALL CONSTRUCTION TO COMPLY WITH NATIONAL CONSTRUCTION CODE OF AUSTRALIA AND APPLICABLE AUSTRALIAN STANDARDS. THIS DRAWING REMAINS THE PROPERTY OF ATCO STRUCTURES & LOGISTICS PTY. LTD. (ATCO). IT MAY NOT BE REPRODUCED OR COPIED WHOLE OR IN PART WITHOUT WRITTEN AUTHORITY.

ATCO
ATCO STRUCTURES & LOGISTICS PTY. LTD. PHONE: (07) 3412 8600
55 TONKA STREET, LUSCOMBE, QLD 4207 FAX: (07) 3412 8699
P.O. BOX 393, BEENLEIGH, QLD 4207 ABN: 71 083 902 309
E-mail: ASL@atco.com

CLIENT	THE TRUSTEE FOR IOR PROPERTY TRUST	TITLE	PLAN
DESCRIPTION	4.2 x 3.0m ABLUTION	PROJECT No.	
ADDRESS	MULTIPLE SITES QLD	SCALE AT A2	1 : 50
DRAWING NUMBER	200228D -A200	REVISION	B



CONFIRM DETAILS OF SET OUTS, LEVELS AND CRITICAL DIMENSIONS ON SITE PRIOR TO SHOP DRAWINGS AND FABRICATION. QUALITY CERTIFIED TO AS/NZS ISO 9001:2008 BY SCI-QUAL INTERNATIONAL REGN No. 531. DO NOT SCALE FROM THIS DRAWING. USE FIGURED DIMENSIONS. OVERALL DIMENSIONS EXCLUDE EXTERNAL CLADDINGS U.N.O. ALL CONSTRUCTION TO COMPLY WITH NATIONAL CONSTRUCTION CODE OF AUSTRALIA AND APPLICABLE AUSTRALIAN STANDARDS. THIS DRAWING REMAINS THE PROPERTY OF ATCO STRUCTURES & LOGISTICS PTY. LTD. (ATCO). IT MAY NOT BE REPRODUCED OR COPIED WHOLE OR IN PART WITHOUT WRITTEN AUTHORITY.

REV	DESCRIPTION	DATE	BY	CHKD
A	ISSUED FOR REVIEW	06.08.20	VT	
B	LAYOUT CHANGED AS PER CLIENT, ADDED HOSE COCK, ADDED LOCK TO DSB, ADDED CUPBOARDS	31.08.20	VT	

ATCO
ATCO STRUCTURES & LOGISTICS PTY. LTD. PHONE: (07) 3412 8600
55 TONKA STREET, LUSCOMBE, QLD 4207 FAX: (07) 3412 8699
P.O. BOX 393, BEENLEIGH, QLD 4207 ABN: 71 083 902 309
E-mail: ASL@atco.com

CLIENT THE TRUSTEE FOR IOR PROPERTY TRUST	TITLE ELEVATIONS
DESCRIPTION 4.2 x 3.0m ABLUTION	PROJECT No.
ADDRESS MULTIPLE SITES QLD	SCALE AT A2 1:50
DRAWING NUMBER 200228D -A300	REVISION B

ISSUED FOR REVIEW

BASEFRAME SCHEDULE	
DESCRIPTION	CENTRE TO CENTRE
310 UB SKID BEAMS	2000

FLOORING SCHEDULE	
ITEM	DESCRIPTION
FLOOR - 75mm JOISTS, 18mm CFC WITH SLIP RESISTANT VINYL (COVERED)	
FLOOR FRAMING	75mm STEEL JOIST (REFER STRUCTURAL SPECIFICATION)
FLOORING	18mm COMPRESSED FIBRE CEMENT (CFC)
FLOOR COVERING	2mm VINYL - SLIP RESISTANT - WC / SHR AREAS ONLY - 500mm COVERED

WALL SCHEDULE	
ITEM	DESCRIPTION
WALL - EXT PLY / MRIB (TOP BAND)	
CLADDING - EXTERNAL	COLORBOND MAXIRIB - HORIZONTAL
CLADDING - EXTERNAL	COLORBOND MAXIRIB - HORIZONTAL
CLADDING - EXTERNAL	COLORBOND MAXIRIB - HORIZONTAL
WALL LINING - INTERNAL	3.6mm POLYESTER COATED PLYWOOD
SISALATION	YES
FRAMING	78mm STEEL STUD (REFER STRUCTURAL SPECIFICATION)
WALL - INT PLY / PLY	
WALL LINING - INTERNAL	3.6mm POLYESTER COATED PLYWOOD
FRAMING	78mm STEEL STUD (REFER STRUCTURAL SPECIFICATION)

CEILING & ROOF SCHEDULE	
ITEM	DESCRIPTION
CEILING (INTERNAL) - 75mm w/	PLY LINING
CEILING LINING - INTERNAL	3.6mm COATED PLYWOOD
JOIST	75mm JOIST (REFER STRUCTURAL SPECIFICATION)
ROOF - SUPERDEK (0.42mm) FNQ w SISALATION	
INSULATION	R2.3 FOIL BACKED FIBREGLASS INSULATION
BIRD PROOFING	YES
SISALATION	YES
ROOF SHEETING	0.42mm BMT SUPERDEK ROOFING

FINISHES SCHEDULE		
ITEM	DESCRIPTION	COLOUR/TREATMENT
FLOOR COVERING	2mm VINYL - SLIP RESISTANT - WC / SHR AREAS ONLY - 500mm COVERED	SILVER
CLADDING - EXTERNAL	COLORBOND MAXIRIB - HORIZONTAL	BLACK BAND
CLADDING - EXTERNAL	COLORBOND MAXIRIB - HORIZONTAL	DEEP OCEAN
CLADDING - EXTERNAL	COLORBOND MAXIRIB - HORIZONTAL	SURFMIST
WALL LINING - INTERNAL	3.6mm POLYESTER COATED PLYWOOD	GREY EMBOSS
SKIRTING	PVC	GREY
WALL JOINT - PLY LINING	PVC	GREY
CORNICE	PVC	GREY
CEILING LINING - INTERNAL	3.6mm COATED PLYWOOD	SILVER CLOUD
ROOF SHEETING	0.42mm BMT SUPERDEK ROOFING	ZINCALUME
EXTERNAL DOOR LEAF	COLORBOND	SURFMIST
EXTERNAL DOOR FRAME	COLORBOND	NIGHT SKY
WINDOW FRAME	POWDERCOATED	BLACK
WINDOW ARCHITRAVE	PVC	GREY
FASCIA	COLORBOND - DEEP OCEAN	
GUTTER	HI-SQUARE, COLORBOND	DEEP OCEAN
VERTICAL CORNER ANGLE	COLORBOND - BLACK	
VERTICAL CORNER ANGLE	COLORBOND - DEEP OCEAN	
VERTICAL CORNER ANGLE	COLORBOND - SURFMIST	

GENERAL NOTES	
- NO ALLOWANCE OF SECTION J ENERGY EFFICIENCY	
- NO ALLOWANCE FOR COMPLIANCE WITH AS1428.1 - 2009 (DESIGN FOR ACCESS & MOBILITY)	
- NO ALLOWANCE FOR FIRE SEPARATION FROM EXISTING BUILDINGS / STRUCTURES ON SITE	
- NO ALLOWANCE FOR FIRE FIGHTING EQUIPMENT	
- LANDING & STAIRS/RAILINGS INSTALL ON SITE BY OTHERS	

FITTINGS SCHEDULE		
ITEM	DESCRIPTION	QTY
Casework		
CW01	CUPBOARD (LOCKABLE) w/ LEGS UNDER, 2 DOOR & 4 SHELVES - 900 x 400 x 2100H	2
Electrical Fixtures		
	CONDUIT - PINPAD PROVISION (PINPAD BY OTHERS) (WALL PENETRATION BY ATCO - 235H - 172W - 26D) (200 DOOR FRAME TO PAD CENTRE - BOTTOM OF PAD AT LOCKING MECHANISM HEIGHT)	2
	ELECTRICAL - SWITCHBOARD, LOCKABLE (1 PHASE)	1
	GPO, SINGLE POLE - 1x10A IPX5	2
	ISOLATION SWITCH FOR HOT WATER SYSTEM	1
Furniture		
FN01	BENCH SEAT, SLATTED TIMBER - 220mm WIDE - 800mm LONG - 450mm HIGH	2
FN02	COAT HOOKS ON TIMBER RAIL - 800L	2
FN03	TOWEL RAIL, CHROME PLATED - 600mm LONG	2
Lighting Fixtures		
	LIGHT - 40W LED BATTEN - IP65	2
	LIGHT SWITCH, SINGLE	2
Plumbing Fixtures		
PL01	WC SUITE c/w TOILET ROLL HOLDER	2
PL02	HAND BASIN, STAINLESS STEEL (HOT & COLD FLICKMIXER) w/ 300mm SPLASHBACK & MIRROR (STAINLESS STEEL)	2
PL03	SHOWER CUBICLE, FIBREGLASS - 945 x 945	2
PL04	FLOOR WASTE	4
PL05	HOT WATER SYSTEM, MOUNTED EXTERNALLY - 125Ltr, 1x3.6kW	1
PL06	WATER INLET	1
PL07	WASTE MANIFOLD OUTLET	1
PL08	HOSE COCK w/ VACUUM BREAK (VANDAL PROOF)	1

DOOR SCHEDULE										
No.	DOOR LEAF			DOOR FRAME	DOOR HARDWARE				QTY	COMMENTS
	DOOR LEAF	SIZE			HANDLE TYPE	LOCKING	CLOSER	SEALS		
D01	HOLLOW CORE MC	2040	770	COLORBOND	LEVER	CLASSROOM ELECTRIC STRIKE w/ INDICATOR BOLT	Yes		2	KEYED ALIKE

WINDOW SCHEDULE										
No.	TYPE	GLAZING		SIZE		SILL HEIGHT	MOULDS	SECURITY	QTY	COMMENTS
		TYPE		H	W					
W01	SLIDING, PV	3mm	OBSCURE	350	750	1960	PVC	-	4	

MECHANICAL SCHEDULE							
No.	DESCRIPTION				SILL HEIGHT	QTY	COMMENTS
ME01	EXHAUST FAN, WALL MOUNTED				1960	2	

CONFIRM DETAILS OF SET OUTS, LEVELS AND CRITICAL DIMENSIONS ON SITE PRIOR TO SHOP DRAWINGS AND FABRICATION. QUALITY CERTIFIED TO AS/NZS ISO 9001:2008 BY SCI-QUAL INTERNATIONAL REGN No. 531. DO NOT SCALE FROM THIS DRAWING. USE FIGURED DIMENSIONS. OVERALL DIMENSIONS EXCLUDE EXTERNAL CLADDINGS U.N.O. ALL CONSTRUCTION TO COMPLY WITH NATIONAL CONSTRUCTION CODE OF AUSTRALIA AND APPLICABLE AUSTRALIAN STANDARDS. THIS DRAWING REMAINS THE PROPERTY OF ATCO STRUCTURES & LOGISTICS PTY. LTD. (ATCO). IT MAY NOT BE REPRODUCED OR COPIED WHOLE OR IN PART WITHOUT WRITTEN AUTHORITY.

REV	DESCRIPTION	DATE	BY	CHKD
A	ISSUED FOR REVIEW	06.08.20	VT	
B	LAYOUT CHANGED AS PER CLIENT, ADDED HOSE COCK, ADDED LOCK TO DSB, ADDED CUPBOARDS	31.08.20	VT	



ATCO
 ATCO STRUCTURES & LOGISTICS PTY. LTD. PHONE: (07) 3412 8600
 55 TONKA STREET, LUSCOMBE, QLD 4207 FAX: (07) 3412 8699
 P.O. BOX 393, BEENLEIGH, QLD 4207 ABN: 71 083 902 309
 E-mail: ASL@atco.com

CLIENT THE TRUSTEE FOR IOR PROPERTY TRUST	TITLE SALES SCHEDULES
DESCRIPTION 4.2 x 3.0m ABLUTION	PROJECT No. SCALE AT A2
ADDRESS MULTIPLE SITES QLD	DRAWING NUMBER 200228D -A500
	REVISION B